

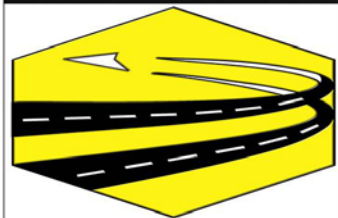
GULF ENGINEERING HOUSE

The Home of End-to-end Solution

2012-2013

THE AREA OF EXPERT

- Urban Planning
- Architecture.
- Land landscape.
- Internal Design.
- Green & Sustainable solutions.
- Project Management.
- Supervision.



ARCHITECTURE AND PLANNING
DEPARTMENT PROFILE



ABOUT GULF ENGINEERING HOUSE

GULF ENGINEERING HOUSE (GEH) IS A SAUDI FIRM, CONDUCTS STUDIES DESIGN, AND SUPERVISION IN THE AREAS OF PAVEMENT, GIS, TRAFFIC, TRANSPORTATION, HIGHWAY AND AIRPORT ENGINEERING, PROJECT MANAGEMENT, ARCHITECTURE AND PLANNING, NON-DESTRUCTIVE TESTING (NDT) AND ELECTRICAL, MECHANICAL ENGINEERING. GEH IS MANAGED BY A GROUP OF HIGHLY EDUCATED PROFESSIONALS. GEH CONSULTING ENGINEERING STAFF CONSISTS OF HIGHLY EXPERIENCED AND SPECIALIZED ENGINEERS WHO



Dr. / Salah Himoud Al-Swailmi

General Manager

GEH IS STRUCTURED INTO FOLLOWING DEPARTMENTS:

- 1-PROJECTS MANAGEMENT AND BUSINESS DEVELOPMENT
- 2-TRAFFIC AND TRANSPORTATION DEPARTMENT
- 3-STRUCTURE ENGINEERING
- 4-ROAD AND HIGHWAY ENGINEERING AND AIR PORT DEPARTMENT
- 5-GEOTECHNICAL AND MATERIALS TESTING DEPARTMENT
- 6-ARCHITECTURE AND PLANNING DEPARTMENT
- 7 -NONE-DESTRUCTIVE TESTING (NDT)
- 8-EQUIPMENT, ELECTRICAL, MECHANICAL ENGINEERING

OTHER ADMINISTRATIVE DEPARTMENTS WORKING IN PARALLEL TO THE ENGINEERING DEPARTMENTS:

- 1-HUMAN RESOURCES DEPARTMENT
- 2-ADMINISTRATIVE DEPARTMENT
- 3-FINANCIAL DEPARTMENT

GEH HAS MAINTAINED A CONTINUOUS PRESENCE IN THE MIDDLE EAST FOR OVER SEVERAL YEARS AND THE COMPANY IS JUSTIFIABLY PROUD OF ITS LONG-TERM ASSOCIATION WITH THE DEVELOPMENT OF THE REGION'S

No	Staff	Numbers
1	Senior Engineers and Experts	35
2	Engineers	203
3	Technicians	440
4	Administration, Librarian and Printing Support Service Personnel	59
5	Technical Support	48

QUALITY MANAGEMENT

GEH HAS ESTABLISHED A QUALITY MANAGEMENT SYSTEM FOR ALL ITS OPERATIONS INCLUDING NDT SERVICES. THE SYSTEM WAS CERTIFIED FOR ISO 9001 BY TUV AT THE BEGINNING OF 2010.

SIGN, SITE AND LANDSCAPING PLANS AND COST PROJECT DEVELOPMENT. QUALITY ASSURANCE IS ESTIMATES AS THEY ARE BEING DEVELOPED. THIS THE RESPONSIBILITY OF THE DEPARTMENT MAN- AGER AND THE PROJECT MANAGER. A SERIES OF QA REVIEWS ARE CONDUCTED DURING PROJECT DEVELOPMENT WITH THE SUPPORT OF THE GROUP LEADER AND PROJECT MANAGER, THE DESIGN LEADERS, AND APPROPRIATE MEMBERS

IMMEDIATE REVIEW OF COMPLETED AC- TIVITIES FOR ACCURACY, COMPLETENESS, AT A MINIMUM, A QA REVIEW IS REQUIRED AT AND ATTENTION TO DETAIL, AND IMMEDI- THE FOLLOWING MILESTONES/STRATEGIC POINTS

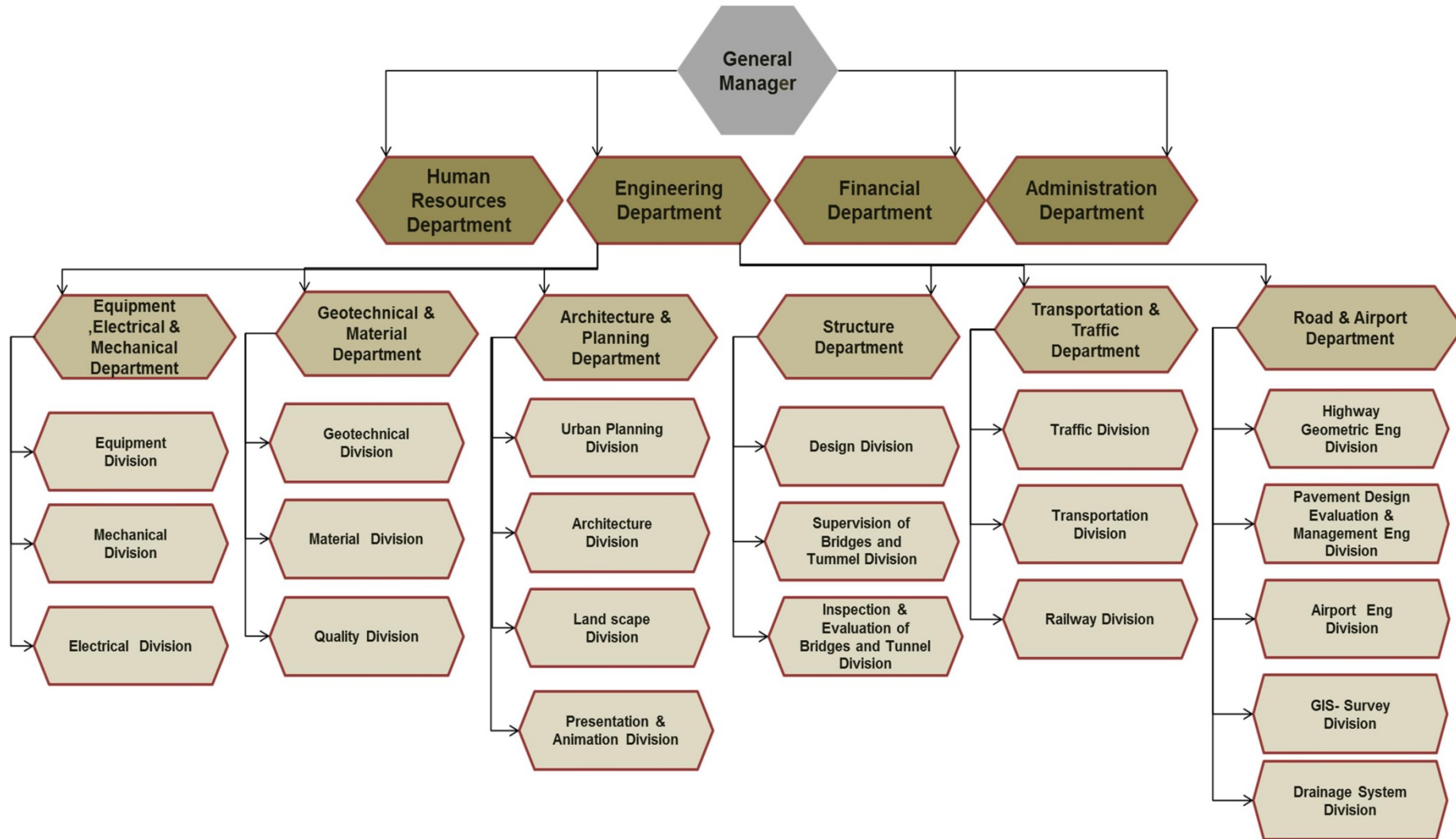
- 1.CONCEPT REVIEW
- 2.PRELIMINARY PLANS REVIEW
- 3.DRAFT FINAL ARCHITECTURAL PLANS REVIEW
- 4.FINAL PLANS (SITE, LANDSCAPING AND ARCHI- TECTURAL) SUBMISSION REVIEW.

QUALITY ASSURANCE (QA) IN THE DE- SIGN PROCESS AT GEH REFERS TO THE FORMAL HIGH-LEVEL REVIEW OF THE PROJECT PLANS AND COST ESTIMATES BY AN EXPERI- ENCED ENGINEERING MAN- AGER AT STRATEGIC POINTS

IN THE PLAN DEVELOPMENT PRO- CESS TO ENSURE AND CERTIFY THAT THE PLANS AND COST ESTIMATES MEET ESTABLISHED QUALITY STAND- ARDS AND PROVIDE FOR APPROPRI- ATE CONSTRUCTABILITY, FLEXIBIL- ITY IN OPERATION AND MAINTEN- ANCE AND COST SAVINGS. ESSEN- Tially, QUALITY ASSURANCE IS THE PROCESS OF ENFORCING QUALITY CONTROL STANDARDS AT STRATEGIC POINTS IN



A LIST OF ALL PROCEDURES AND FORMS IS AT- TACHED TO TENDER DOCUMENTS TOGETHER WITH THE CURRENT QUALITY ASSURANCE DESIGN PRO- CEDURE. IN THE TWO PARAGRAPHS BELOW A BRIEF SUMMARY IS GIVEN ON THE QUALITY AS- SURANCE DESIGN PROCEDURE AT GEH. BASICALLY QUALITY CONTROL (QC) IN THE DE- SIGN PROCESS AT GEH REFERS TO THE DAILY PROCESSES/PRACTICES/CHECKS IN PLACE TO CON- TROL THE QUALITY OF THE ARCHITECTURAL DE-

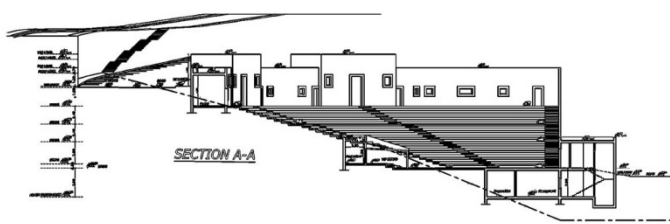
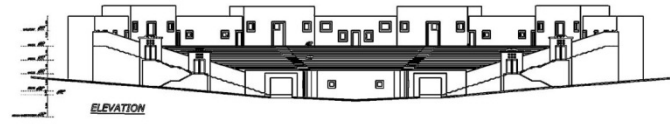
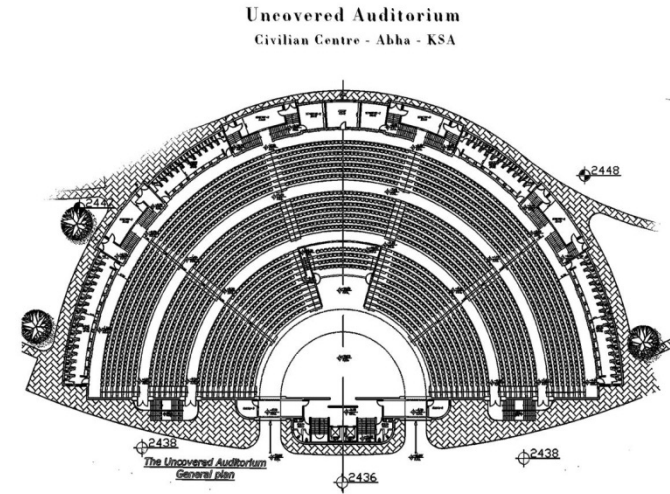


GEH organization Structure

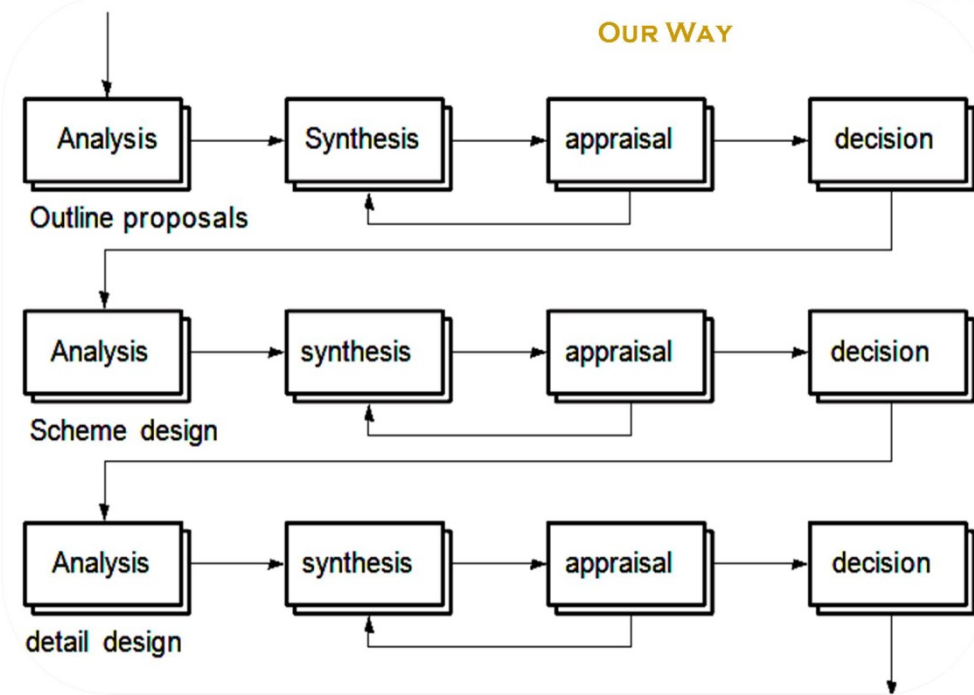
INTRODUCTION TO THE DEPARTMENT OF ARCHITECTURE AND URBAN PLANNING

THE KINGDOM OF SAUDI ARABIA HAS ACHIEVED TREMENDOUS DEVELOPMENT IN THE FIELD OF URBANISM. AT PRESENT, THE KINGDOM IS RANKED AMONG THE MOST ADVANCED STANDARD OF LIVING PLACES ALL OVER THE WORLD. GULF ENGINEERING HOUSE HAS BEEN COMMITTED TO ASSIST AND HAVE DISTINCTIVE ROLE IN THE URBANIZATION DEVELOPMENT OF THE KINGDOM THROUGH THE WIDE RANGE OF ENGINEERING CONSULTANCY. IN THIS SCOPE OF VISION, THE COMPANY HAS ESTABLISHED THE DEPARTMENT OF ARCHITECTURE AND URBAN PLANNING TO COMPLETE THE PROCESS OF THE BUILT ENVIRONMENT IN ONE HOLISTIC APPROACH. IN ORDER TO ACHIEVE THIS GOAL, THE COMPANY NOT ONLY INTEGRATES BETWEEN THE VARIOUS INTERNATIONALLY RECOGNIZED DEPARTMENTS IN HOUSE, BUT ALSO HOLDS JOINT-VENTURES WITH RENOWNED ESTABLISHMENTS WORLDWIDE. GULF ENGINEERING HOUSE OFFERS THE SERVICES OF CONSULTATION IN THE FIELDS OF ARCHITECTURE AND URBAN PLANNING, INCLUDING ALL ASPECTS OF PROJECT MANAGEMENT AND SITE SUPERVISION, WHICH COVERS DIFFERENT TYPES OF BUILDINGS AND URBAN AREAS SUCH AS RESIDENTIAL, COMMERCIAL AND OFFICE BUILDINGS, TOURISTIC DEVELOPMENT, AND SPECIALIZED FACILITIES OF MEDICAL CENTERS, EDUCATIONAL CAMPUSES AND CULTURAL CENTERS. THIS IS CARRIED OUT FROM THE PRELIMINARY CONCEPTUAL STAGE TO THE TURN-KEY OCCUPANCY, WITH FUTURE VIEW TO ENTER THE FIELD OF CONSTRUCTION, THUS BECOMING DESIGN & BUILT FIRM. THEREFORE, GEH CONTINUES TO BUILD THE AMBITION OF EXTENDING THE ACHIEVEMENT OF MANY ENGINEERING PROJECTS FOR THE BENEFIT OF BOTH PUBLIC AND PRIVATE SECTORS, DEPENDING WITH CONFIDENCE ON ITS METHOD OF SCIENTIFIC APPROACH TOWARDS PROBLEM SOLVING BY HIGHLY EDUCATED STAFF AT ALL LEVELS, AND ACCORDING TO INTERNATIONAL STAND-

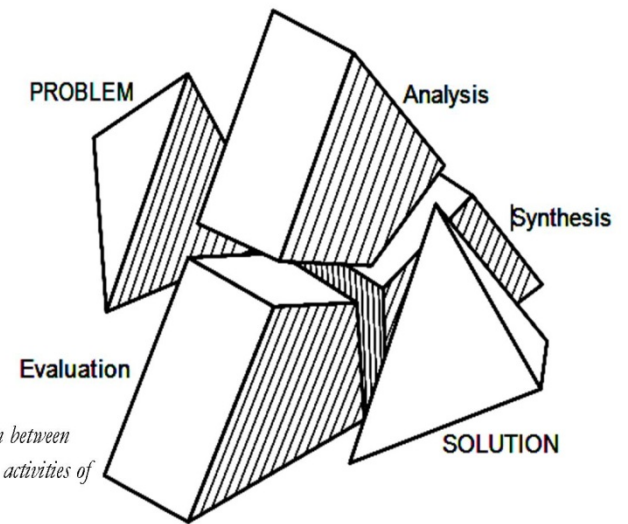
ARDS FOR INTERCONNECTED ARCHITECTURE AND URBAN PLANNING WITH CORNERSTONES OF TOTAL ENGINEERING.



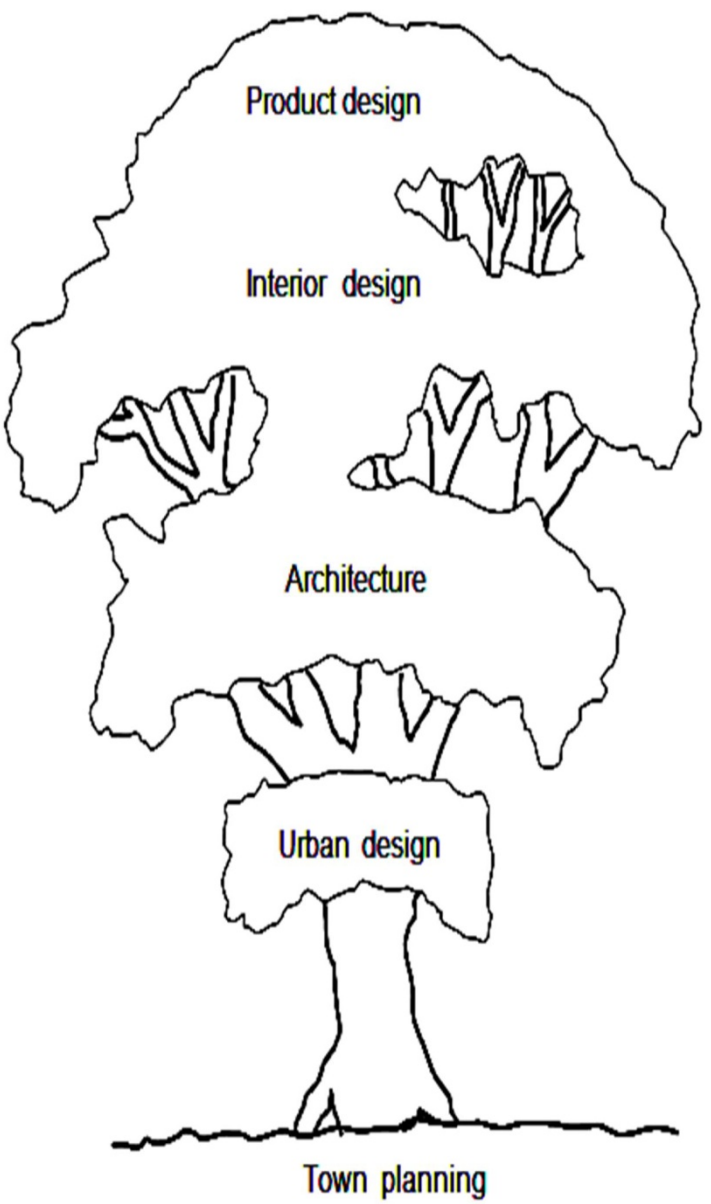
OUR WAY



The Markus/Mover map of the design process



The design process seen as a negotiation between problem and solution through the three activities of analysis, synthesis and evaluation



A 'tree' of three dimensional design fields

THE TEAM WORK



architecture and planning department team

ENG. HAITHAM ALKOBLAN MANAGER OF ARCHITECTURE & PLANNING DEPARTMENT

ENGINEER HAITHAM HAS A MASTER DEGREE FROM POLYTECHNIC INSTITUTE OF NEW YORK UNIVERSITY IN NEW YORK CITY IN PROJECT MANAGEMENT IN 2010. HE GRADUATED FROM KING SAUD UNIVERSITY WITH A BS IN PLANNING AND URBAN DESIGN IN 2005. HE ALSO COMPLETED MANY TRAINING CERTIFICATES FROM UNITED STATES IN AREAS OF: SITE SAFETY, CONSTRUCTION SAFETY, CONSTRUCTION PROJECT MANAGEMENT, REAL ESTATE DEVELOPMENT. WORKED IN THE FIELD OF REAL ESTATE DEVELOPMENT, HOTELS AND TOURISM CONSTRUCTION. PRESENTLY HE MANAGES THE ARCHITECTURE DIVISION AT GEH.

ENG. SAFWAN AI MOUHANDES ARCHITECTURE ENGINEER

ARCHITECT D.E.S.A, GRADUATED FROM PARIS IN FRANCE IN JANUARY 12TH, 1993, WITH 19 YEARS OF EXPERTISE IN DIFFERENT PROJECTS SCALE WORLDWIDE, PROACTIVE AND INNOVATIVE, ACCURATE IN MANAGING A DESIGN TEAM FROM THE CONCEPT INCEPTION TO ANY PROJECT COMPLETION.

ENG. SAFWAN RUSTOM ARCHITECTURE ENGINEER

B.SC.(HONOUR) DEGREE OF ARCHITECTURE AND ENVIRONMENTAL PLANNING, GRADUATED FROM SHARG AL-NEIL UNIVERSITY IN KHARTOUM IN MARS, 2001, WITH 2 YEARS OF EXPERTISE IN DIFFERENT TYPES OF ARCHITECTURAL AND URBAN PROJECTS, ALSO HAS PARTICIPATED IN PERFORMANCE OF MANY RESEARCHES PROJECTS, AND SCIENTIFIC SE UNARS IN DIFFERENT FIELDS OF DESIGN AND CONSTRUCTIONS. WORKED AS CONSULTANT FOR MANY TOWERS PROJECTS AND PREFABRICATED BUILDINGS PROJECTS. TECHNICAL MANAGER OF RESIDENTIAL PROJECTS IN SUDAN •

ENTIFIC SE UNARS IN DIFFERENT FIELDS OF DESIGN AND CONSTRUCTIONS. WORKED AS CONSULTANT FOR MANY TOWERS PROJECTS AND PREFABRICATED BUILDINGS PROJECTS. TECHNICAL MANAGER OF RESIDENTIAL PROJECTS IN SUDAN •

ENG. NOUR AI DAIM IRRIGATION & BOTANIES ENGINEER

SPECIALIZED IN LANDSCAPE IRRIGATION AND BOTANIES, WITH BACHELOR DEGREE IN AGRICULTURE. GRADUATED IN 2005 FROM BAKIT AL REDA UNIVERSITY IN SUDAN, WITH SEVEN YEARS OF EXPERTISE IN IRRIGATION SYSTEMS AND THE DESIGN OF BOTANIES FOR DIFFERENT TYPES OF URBAN AND RURAL PROJECTS USING CAD AND STATISTICAL BOX PROGRAMS OF COMPUTING SKILLS. MEMBER OF THE UNION OF AGRICULTURAL ENGINEERS IN SUDAN, AND CERTIFIED BY THE SUDANESE MINISTRY OF AGRICULTURE AND IRRIGATION.

ENG. MOHSEN SAIF ARCHITECTURE ENGINEER

BACHELOR OF ARCHITECTURE, GRADUATED FROM ADEN UNIVERSITY FACULTY OF ENGINEERING, ARCHITECTURE DEPT. IN JANUARY 17TH, 2006, (GOON) GRADUATION PROJECT TECHNICAL RESEARCH CENTRE (VERY GOOD) WITH 06 YEARS OF EXPERTISE IN DIFFERENT PROJECTS SCALE WORLDWIDE, IN ARCHITECTURAL DESIGN -URBAN DESIGN -AND LANDSCAPE.

ENG. MOHAMED OSAMA ARCHITECTURE ENGINEER

BACHELOR OF ARCHITECTURE, GRADUATED FROM OCTOBER UNIVERSITY FOR ARCHITECTURE ENGINEERING AND BUSINESS ADMINISTRATION TECHNOLOGY IN 2004, WITH 8 YEARS OF EXPERTISE IN DIFFERENT PROJECTS SCALE WORLDWIDE, WORKED IN MOST AREAS OF ARCHITECTURE AND BUILDING MATERIALS AND CONSTRUCTION, WORKED IN VARIOUS AREAS AND SPECIALIZED IT, ADDED TO THE EMPLOYERS QUALITY AND EXCELLENCE AND THEY ADD HIS EXPERIENCE AND MORE KNOWLEDGE.

FROM PAKISTAN IN 2005, WITH MORE THAN 4 YEARS OF EXPERTISE IN DIFFERENT PROJECTS SCALES WORLDWIDE, PROACTIVE AND INNOVATIVE.

MR. MOHAMED HEMA GRAPHICS DESIGNER

HOLDING BSC DEGREE, FACULTY OF ARTS, GEOGRAPHY DEPARTMENT, MAPS SECTION, MUNOFIA UNIVERSITY 2004, EGYPT AMONG TASKS ASSIGNED TO HIM IS TO DESIGN 3D MODELS, ARCHITECTURE PRESENTATIONS AND VIDEO PRESENTATIONS FOR GRADUATION PROJECTS OF ENGINEERING COLLEGE, EGYPT EVER SINCE 2001, HE DESIGNED 3D MODELS, ARCHITECTURE PRESENTATIONS AND VIDEO PRESENTATIONS FOR GREATER VARIETY OF ESTABLISHMENTS AND OFFICES WITHIN SAUDI ARABIA. TODAY, HE IS THE IN CHARGE OFFICIAL OF 3D DESIGNING AND OUTPUTS, GULF ENGINEERING HOUSE.

MR. MOHAMED FOUAD GRAPHICS DESIGNER

HOLDS TWO DEGREES OF ENGINEERING DIPLOMA IN 2002 FROM THE TECHNICAL INSTITUTE IN YEMEN, AND BACHELOR DEGREE IN BUSINESS ADMINISTRATION FROM THE UNIVERSITY OF MODERN SCIENCES ALSO IN YEMEN. SUPERVISED THE IMPLEMENTATION OF MANY PROJECTS IN YEMEN, AND THEN HELD THE POSITION OF HEAD OF GRAPHICS DEPARTMENT IN THE ENGINEERING ESTABLISHMENT OF AL-THURRAYA INVESTMENT COMPANY, THROUGH WHICH HE DEVELOPED MANY WORKS FOR INVESTMENT COMPANIES AND ENGINEERING OFFICES.

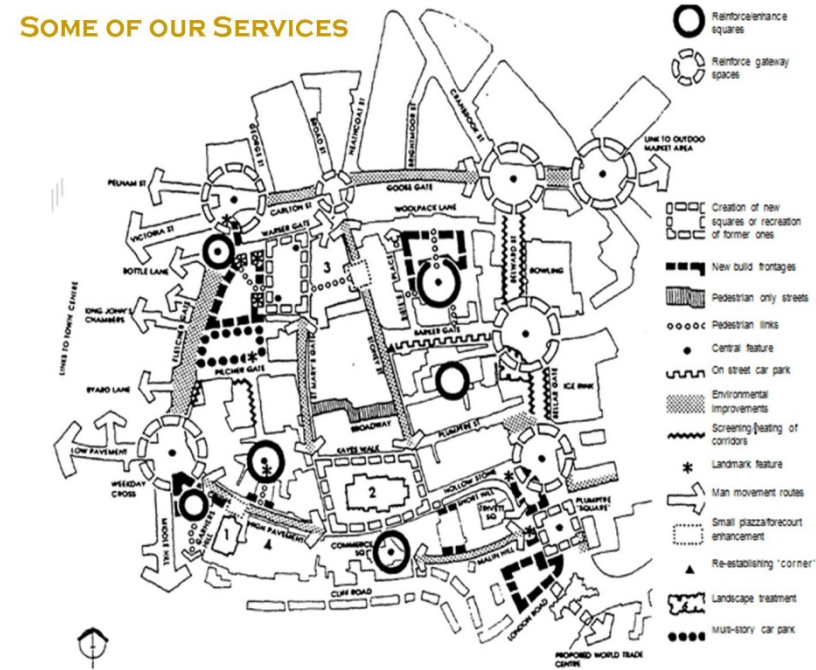
MR. ATTIQUE MIHAS ARCHITECTURAL CAD OPERATOR

ARCHITECTURAL DRAFTSMAN COURSE

MR. AFDAL AHMED ARCHITECTURAL CAD OPERATOR

TO CARRY OUT A PROFESSION WITH AN ORGANIZATION, PROPOSE EXIGENT JOB SURROUNDINGS AND DEVELOPMENT PROSPECT, WHERE MY EDUCATION, SPECIALIZED PROFICIENCY, AND CAPABILITY WOULD BE VALUABLE TO THE GROWTH OF MY ORGANIZATION AND MYSELF.

****Female Section for Interior Design**



Urban Studies and Analysis

ID	Task Name	30 Mar '98							06 Apr '98							13 Apr '98							20 Apr '98							27 Apr '98						
		W	T	F	S	S	M	T	W	T	F	S	S	M	T	W	T	F	S	S	M	T	W	T	F	S	S	M	T	W	T	F	S	S	M	T
1	DESIGN PROCESS COMMENCEMENT	▶ 01/04																																		
2	Develop scheme design																																			
3	Consult planning authority																																			
4	CONTRACT PROCESS	◆ 06/04																																		
5	Shortlist contractors																																			
6	Meet roofing contractors																																			
7	Meet landscape contractors																																			
8	Appoint contractors																																			
9	CONSTRUCTION WORKS	◆ 21/04																																		
10	Site clearance																																			
11	External works and landscaping																																			

Assists in planning

Environmental assessments: components.

- Physical environment
 - Air and atmosphere
 - Water resources and water bodies
 - Soil and geology
 - Flora and fauna
 - Human beings
 - Landscape
 - Cultural heritage

Climate

Socio-economic environment
Economic base – direct

- Economic base – indirect
- Demography
- Housing
- Local services

Socio-cultural

- Air quality
- Water quality and quantity
- Classification, risks (e.g. erosion)
- Birds, mammals, fish, etc.; aquatic and terrestrial vegetation
- Physical and mental health and well-being
- Characteristics and quality of landscape
- Conservation areas; built heritage; historic and archaeological sites
- Temperature, rainfall, winds, etc.

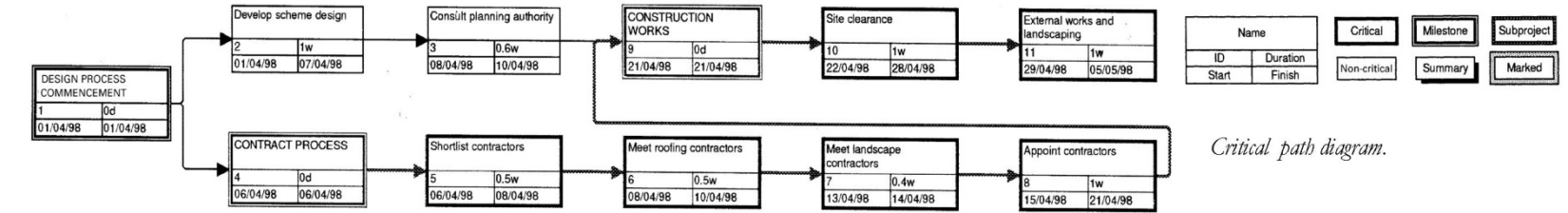
- Direct employment; labor market characteristics; local/non-local trends
- Non-basic/services employment; labor supply and demand
- Population structure and trends
- Supply and demand
- Supply and demand of services; health education, police, etc.
- Lifestyle/quality of life; social problems (e.g. crime); Community stress and **conflict**

What could be provided

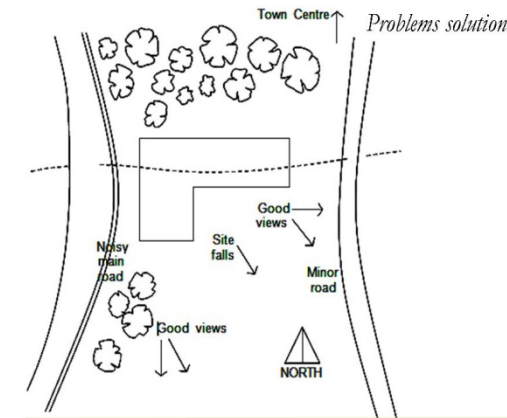
- A Inception
- B Feasibility
- C Outline proposals
- D Schemedesign
- E Detail design
- F Production information
- G Bills of quantities
- H Tender action
- J Project planning
- K Operations on site
- L Completion

GULF ENGINEERING HOUSE

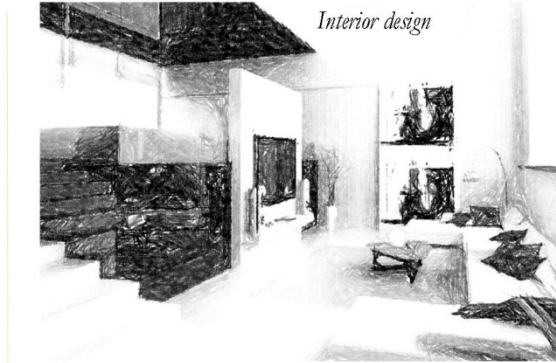
ARCHITECTURE & PLANNING



Critical path diagram.



Problems solution

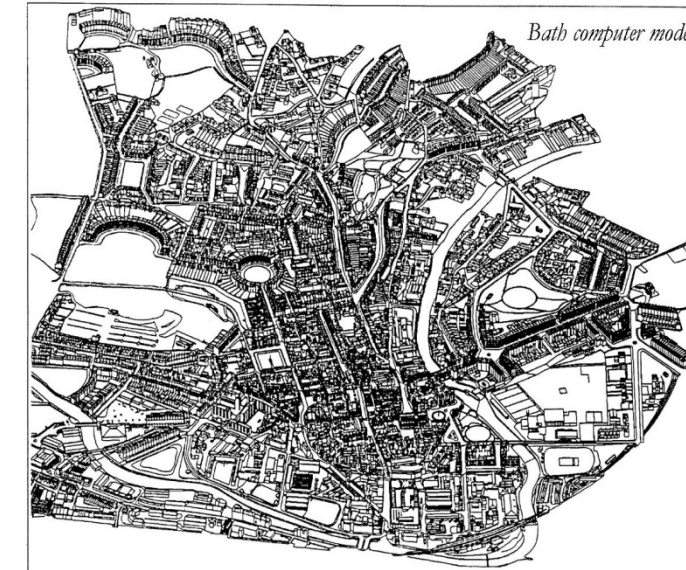


Interior design

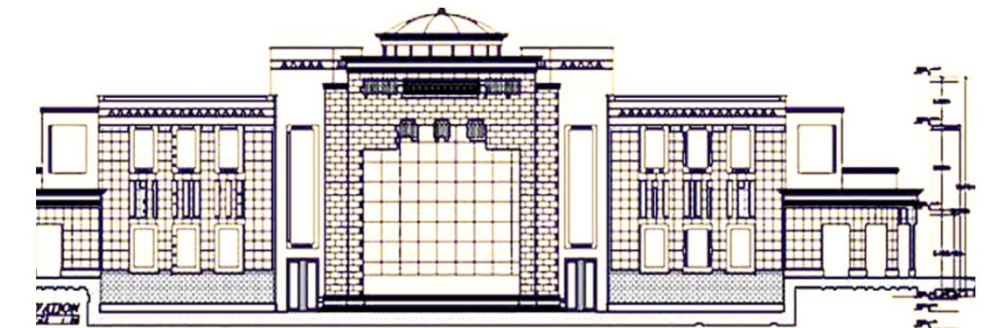
Urban design report: list of contents

EXECUTIVE SUMMARY

- CLIENT'S BRIEF including goals, objectives and program
- INVESTIGATION including site surveys and study of design precedents
- ANALYSIS of the survey and other evidence gathered
- PROBLEM STATEMENT including generation of alternative solutions
- EVALUATION OF ALTERNATIVES
- DEVELOPMENT OF THE PLAN
- IMPLEMENTATION including cost, delivery of the plan, phasing and arrangements for monitoring



Bath computer model



Architecture ideas and plans

SOME OF OUR WORK

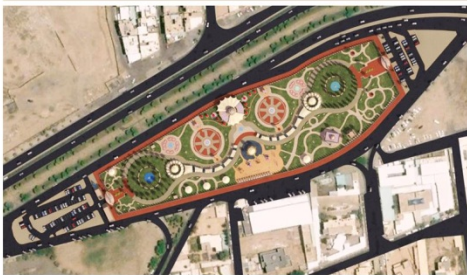
DOKHNA PARKING - RIYADH - K.S.A



AL ANOUD GARDEN - TAIF - K.S.A



AL ANOUD GARDEN - TAIF - K.S.A



CIVILIAN CENTER - ABHA - K.S.A



CIVILIAN CENTER - ABHA - K.S.A



AL HURIDA BEACH - ABHA - K.S.A



AL HURIDA BEACH - ABHA - K.S.A



GULF ENGINEERING HOUSE
ARCHITECTURE AND PLANNING

CONTACT FORM

Name

Address

Telephone

GULF ENGINEERING HOUSE
A R C H I T E C T U R E & P L A N N I N G

P.O.BOX 27108
Riyadh 11417



Saudi Arabia

Riyadh: P.O.Box 27108 Riyadh 11417
Tel. +966-1-4537171 Fax. +966-1-4539292

Dammam: P.O.Box 3569 Dammam 31481
Tel. +966-3-8210415 Fax. +966-3-8120412

hddah: P.O.Box 108513 hddah 21351
T l.+966-2-6198375 Fax. +966-2-6198376

Makkah: P.O.Box 20842 Makah 21955
Tel. +966-2-57533GG Fax. +966-2-5753377



Madina: P.O.Box 4-1896 Madina
Tl. +966-4-8644331 Fax. +966-4-R644332

Qasim: P.O.Box 4651 Buridah 51412
Tel. +966-6-3260357 Fax. +966-G-3260494

Yanhu: P.O.Box 145551 Yanhu 41315
Tl. +966-4-3902219 Fax. +966-4-3914317

Taif: P.O.Box 20842 Taif 21955
Tel. +966-2-7444195 Fax. +966-2-74442209



Jordan

Amman: Makah RQad, Buildin 219 Office 503
Tel. +962-653G5723 Fax. +962-GS365749

PLEASE
PLACE
STAMP
HERE

Phone: +9664537171
Fax: +9664539292
E-mail: Admin@daralkhalij.com

↑	King Abdulh Rd		East Rung
			Othamn Rd
			Abou Bake RD

GULF ENGINEERING HOUSE

Founded in 2003 by Dr./ Salah Himoud Al-Swailmi with idea of providing community services, consultation and studies in the many engineering areas . With a mission to will be held up as the leading engineering consulting company . In addition, to aim that Gulf Engineering House infrastructure would maintain an outstanding performance in engineering field.

[GEH Head Office]

